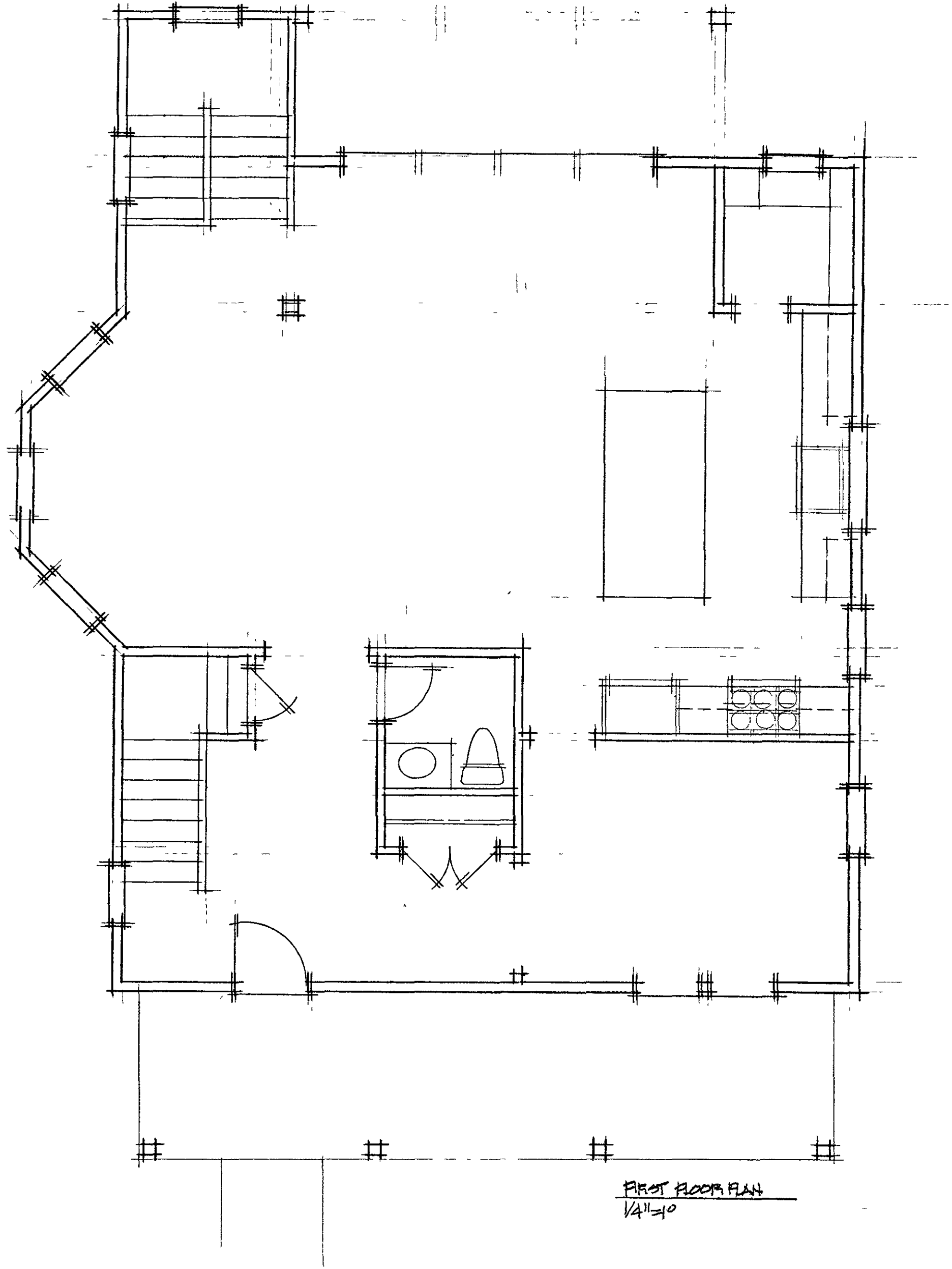
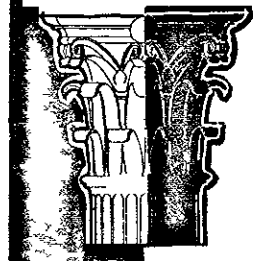


SECOND FLOOR PLAN  
1/4"=1'-0"



FIRST FLOOR PLAN  
1/4"=1'-0"



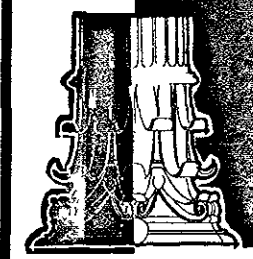
**ROYCE CHARLES JARRENDT**

Architect  
Clifton, Virginia 20124

703-932-5762

12639 Chapel Road

12722 Chestnut Street



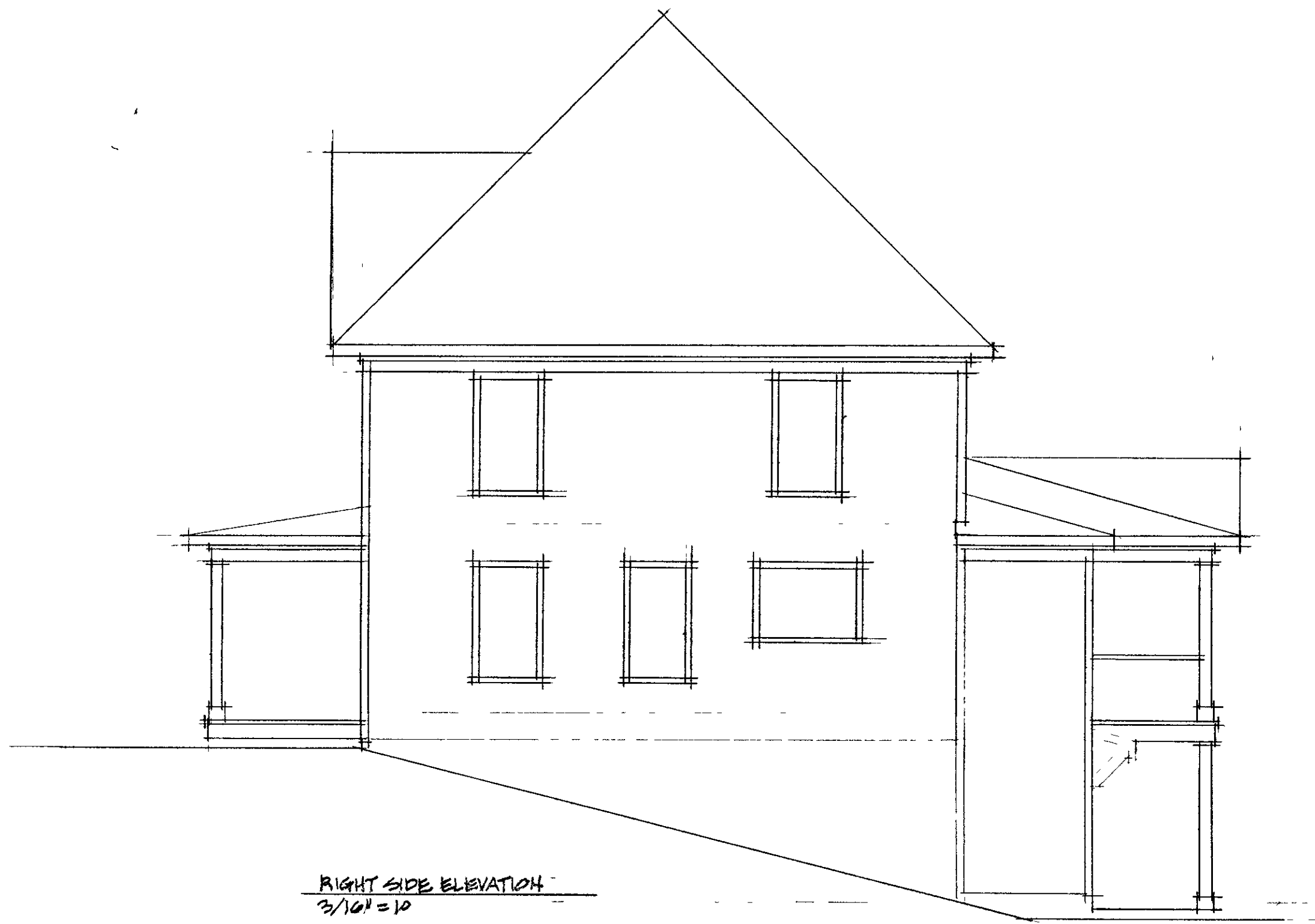
Royce C. Jarrendt, Architect, expressly reserves its common law copyright and other property rights in the plans. These plans are not to be reproduced, changed or copied in any form or manner whatsoever.



LEFT SIDE ELEVATION  
3/16" = 1'



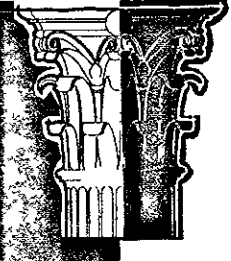
FRONT ELEVATION  
3/16" = 1'



RIGHT SIDE ELEVATION  
3/16" = 1'

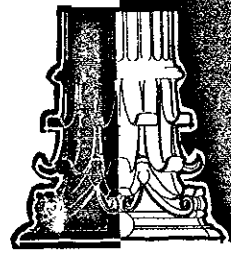


REAR ELEVATION  
3/16" = 1'



**ROYCE CHARLES JARRENDT**  
Architect  
Clifton, Virginia 20124  
12639 Chapel Road  
703-932-5762

12722 Chestnut Street



Royce C. Jarrendt, Architect, reserves his copyright and other property rights in the plans. These plans are not to be reproduced, changed or copied in any form or manner without his written consent.