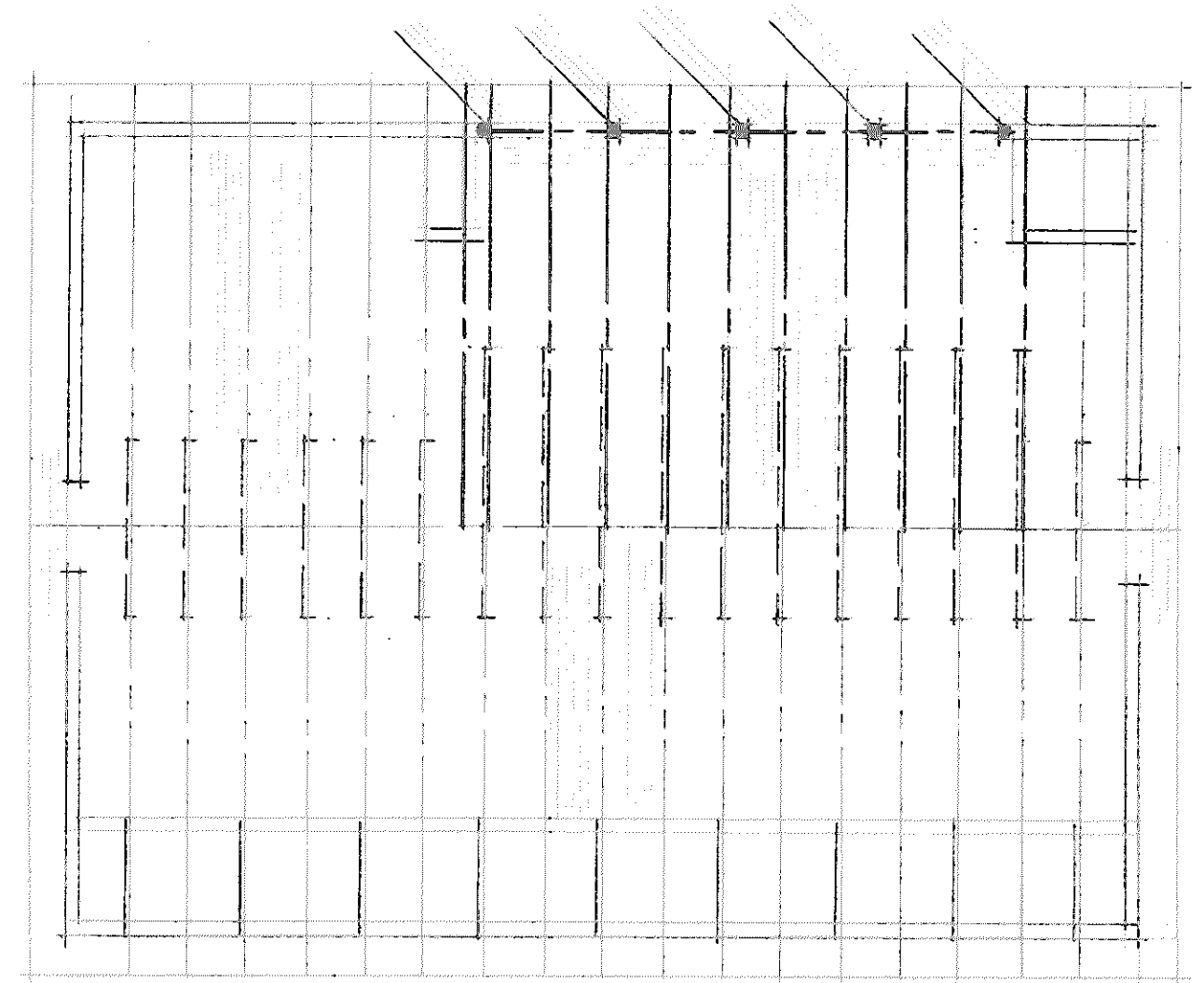
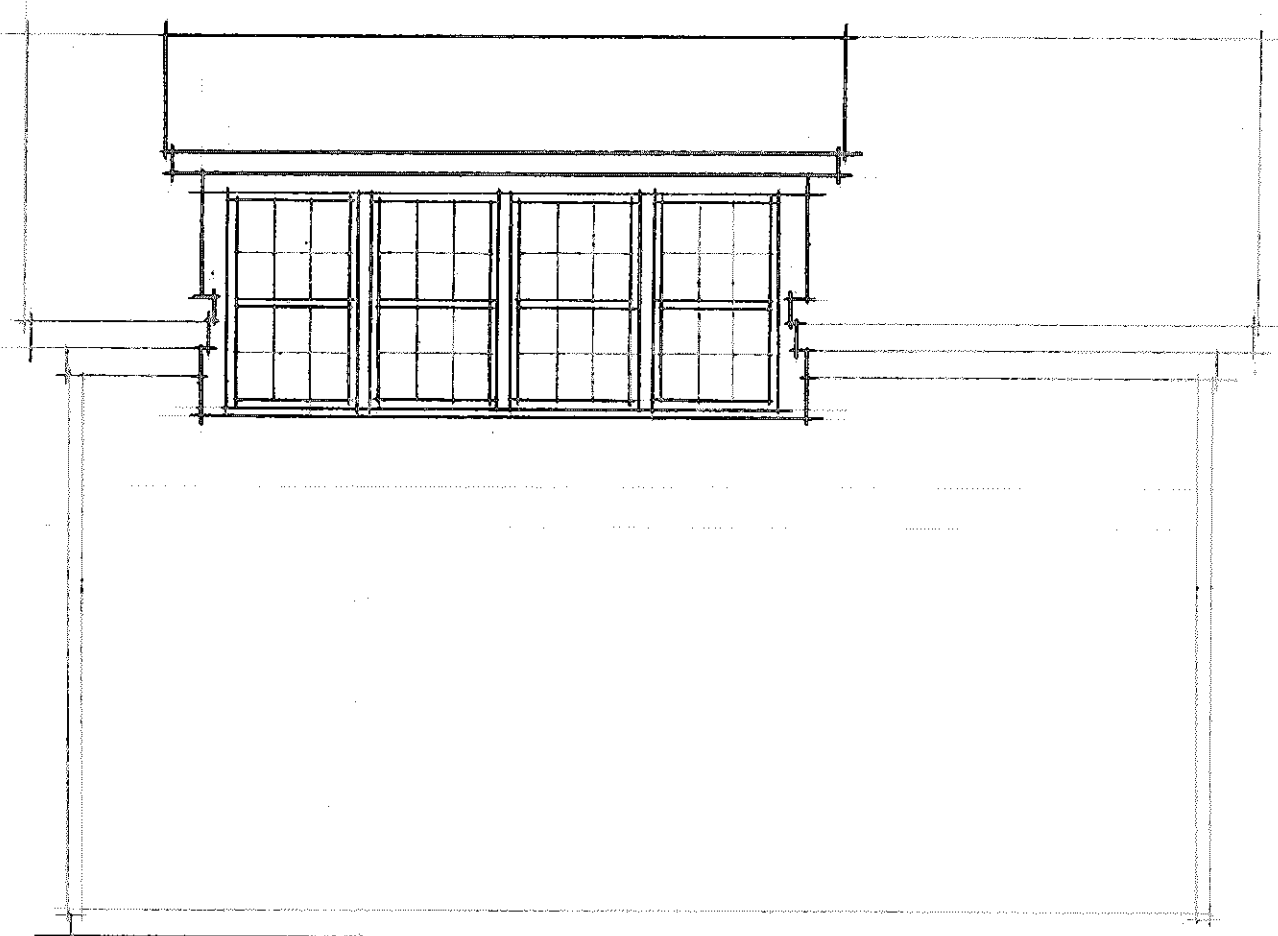


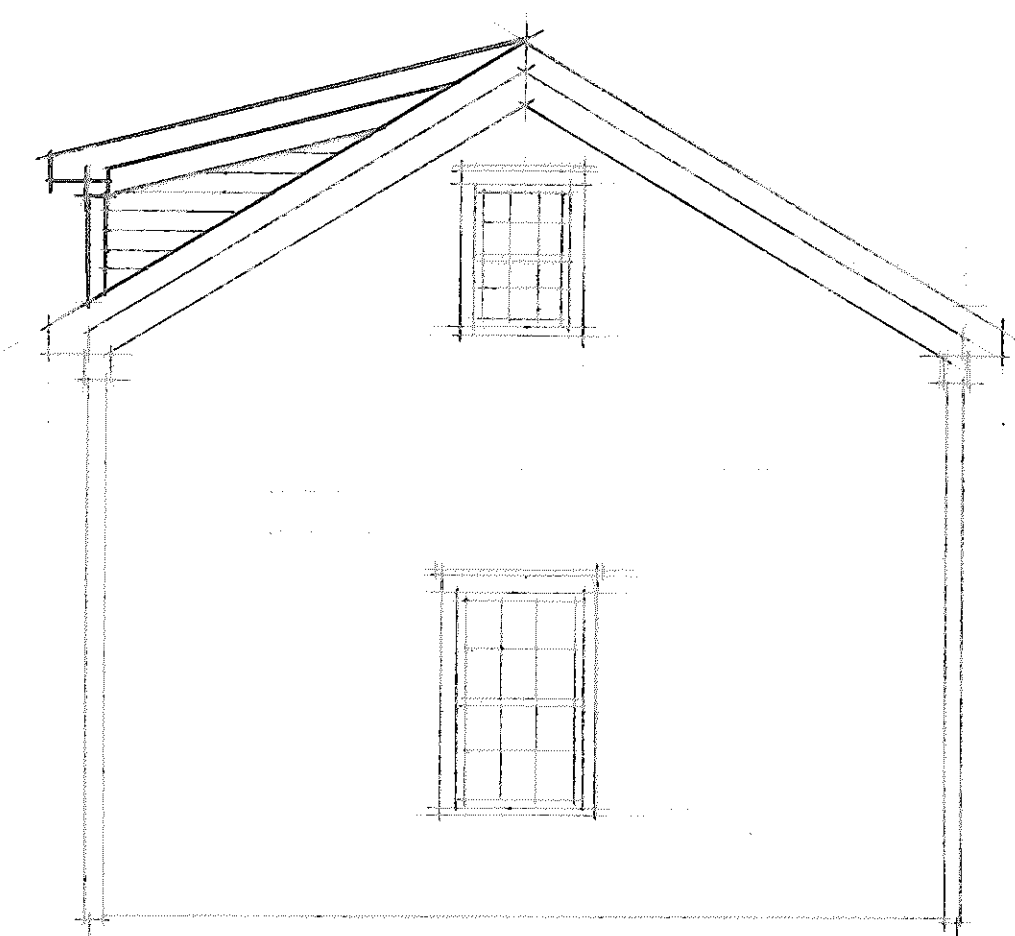
Building Section
1/4" = 1'-0"



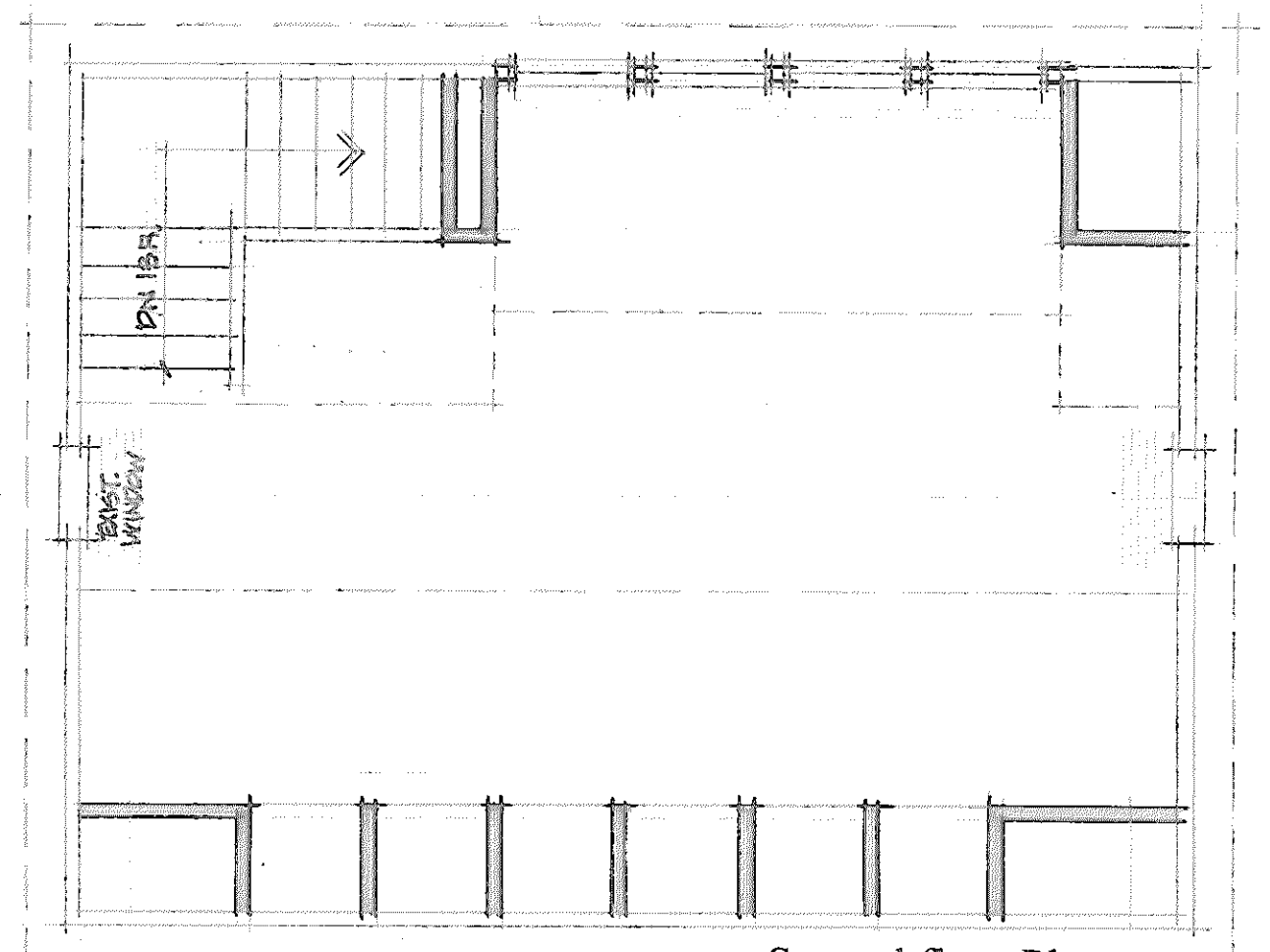
Roof Dormer Framing
1/4" = 1'-0"



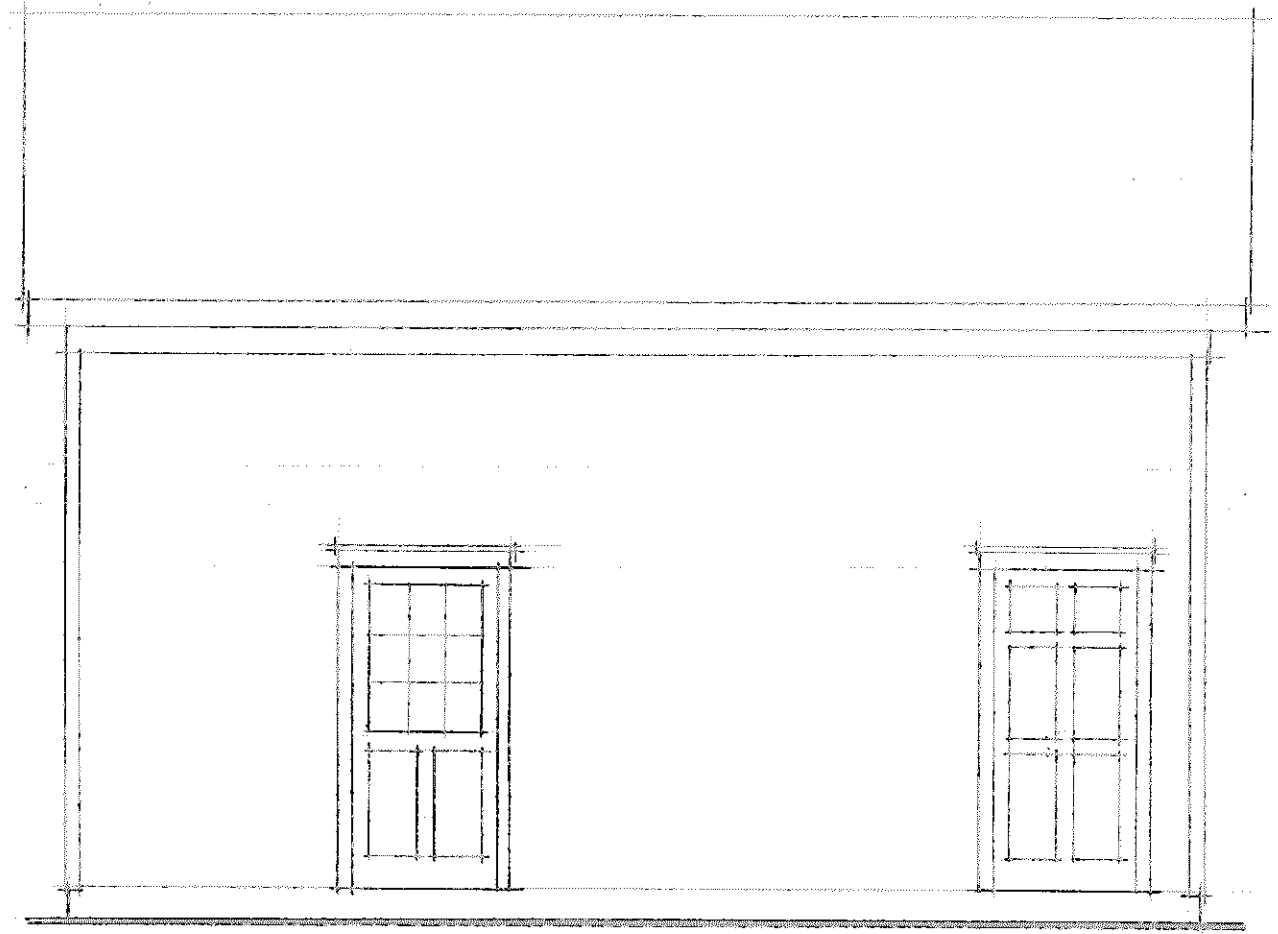
Rear Elevation
1/4" = 1'-0"



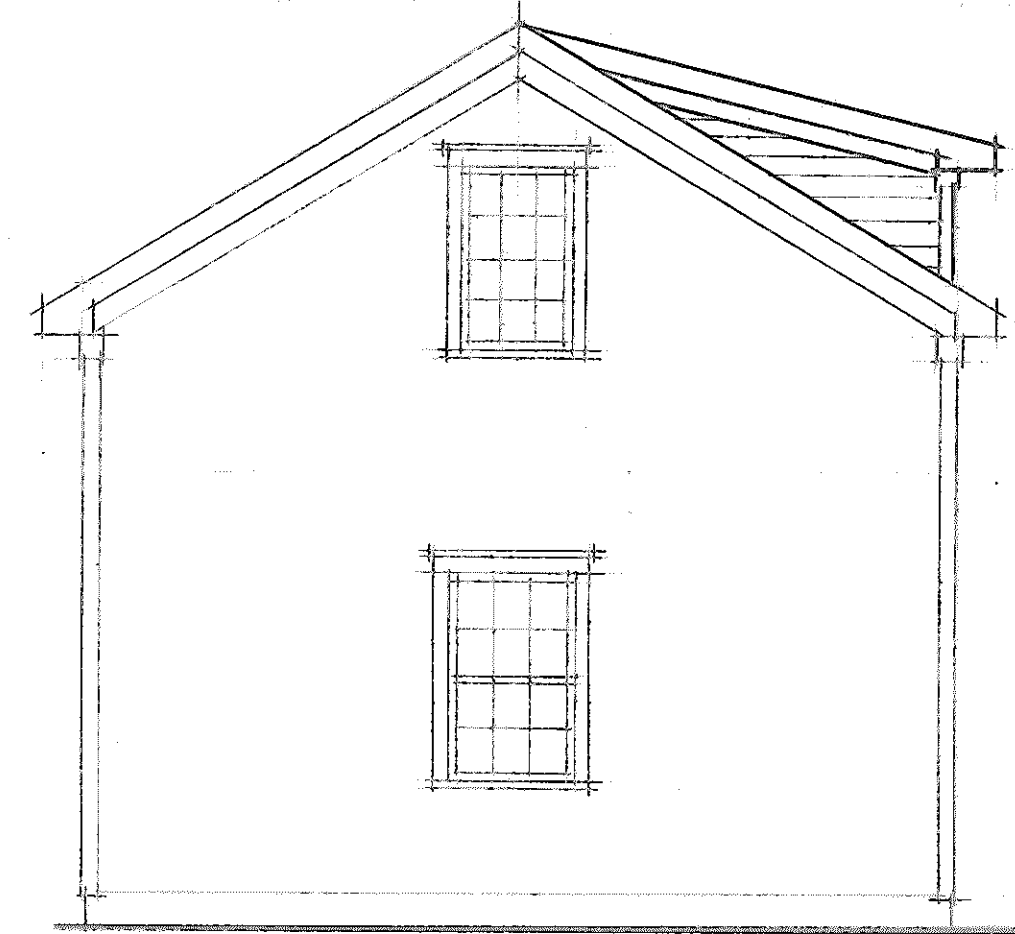
Left Side Elevation
1/4" = 1'-0"



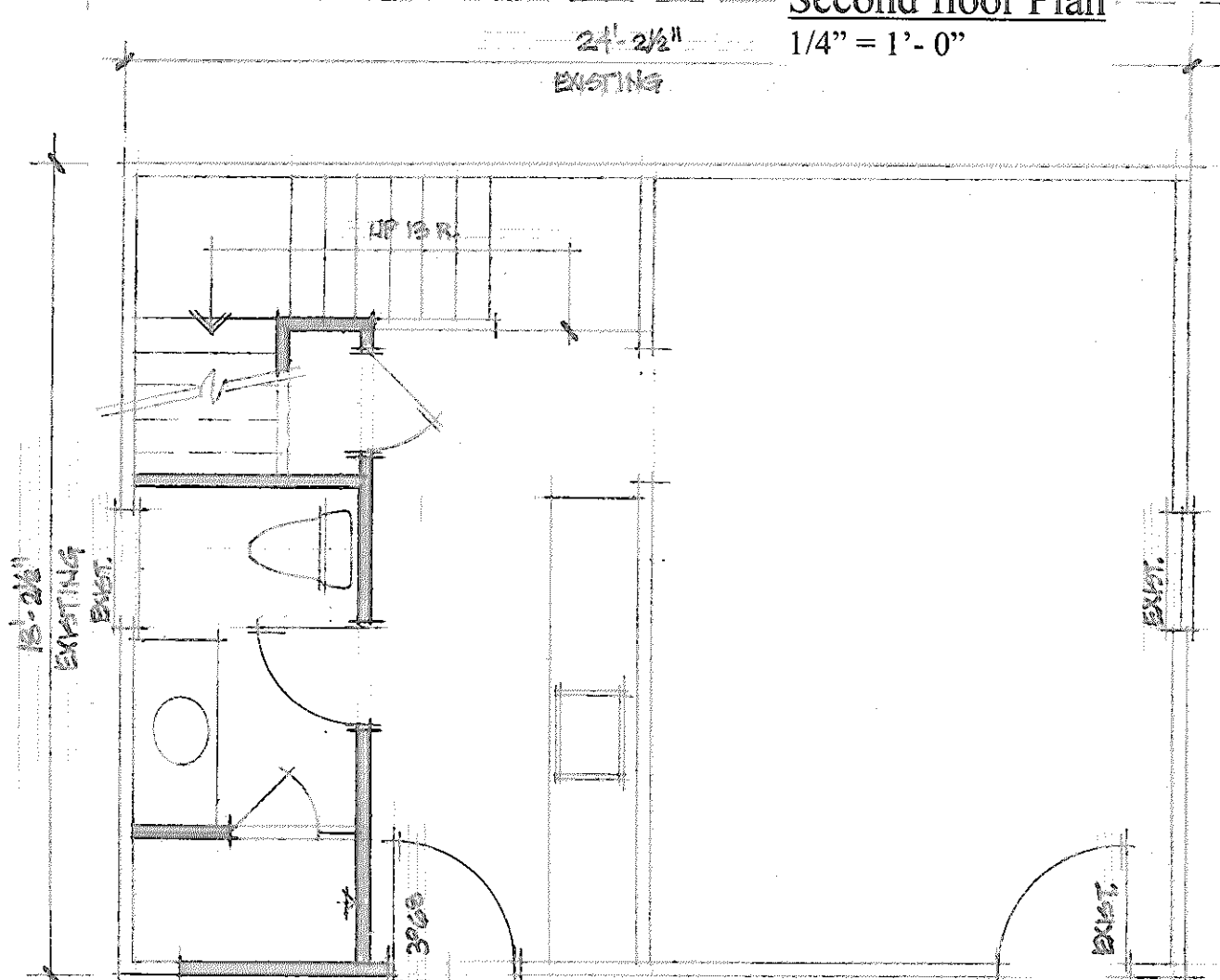
Second floor Plan
1/4" = 1'-0"



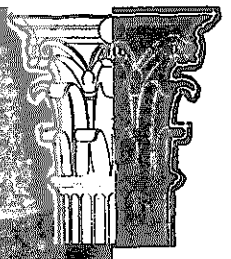
Front Elevation
1/4" = 1'-0"



Right Side Elevation
1/4" = 1'-0"

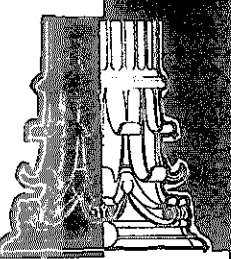


First Floor Plan
1/4" = 1'-0"



ROYCE CHARLES JARRENTI
Architect
Clifton, Virginia 20124
12639 Chapel Road
703-932-5762

7156 Main Street



Royce C. Jarrenti, Architect, expressly reserves his common law copyright and other property rights in these plans. These plans are not to be reproduced, changed or copied in any form or manner whatsoever.